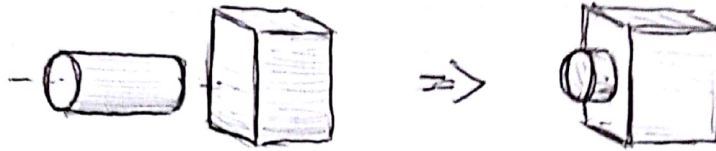
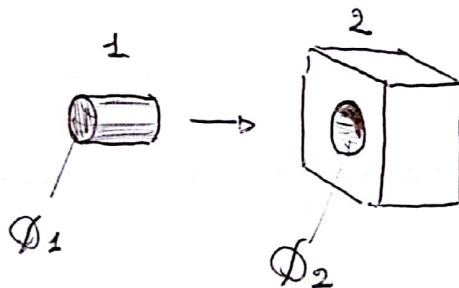


1)



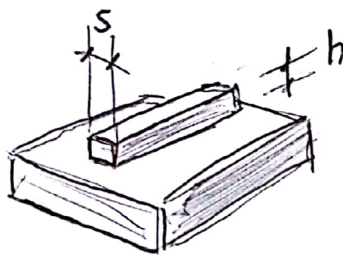
Possono restare 2 solidi ~~interpenetranti~~
compenetrati o bisogna fare un "unisci" o
"saldare" in ~~base~~ modo che sia un solo
solido senza parti compenetrate?

2)



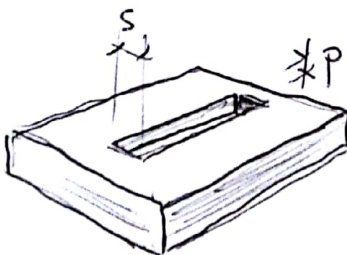
quanto deve
essere $\phi_2 - \phi_1$
affinché 1 entri
in 2 restando poi
fermo?

3)



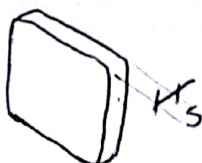
Quanto sono h_{min} e
 s_{min} affinché il
rilievo sia stampato?

4)



Discorso analogo ma
per uno scasso

5)



s_{min} di un elemento piatto?
(tipo piatto respingente)